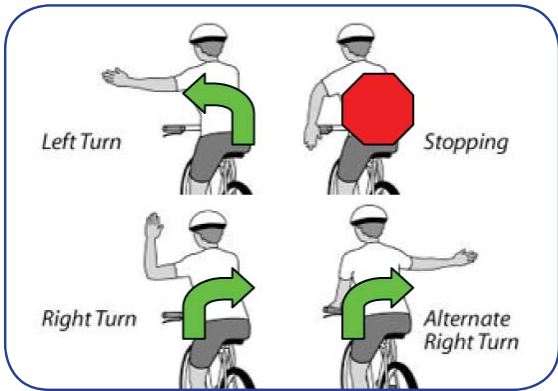
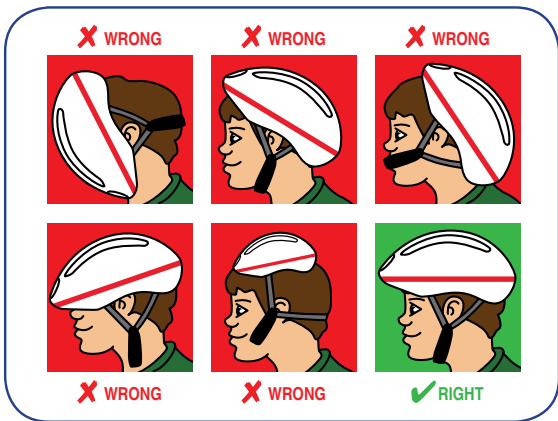




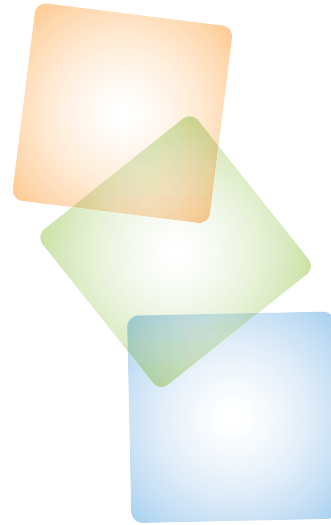
**Be visible. Wear reflective clothing and use lights at night.**



**Always use proper hand signals.**



**Protect Your Head. Wear a properly fitted helmet.**



**Created in collaboration with:**



UNIVERSITY of ROCHESTER  
MEDICAL CENTER

GOLISANO  
CHILDREN'S HOSPITAL



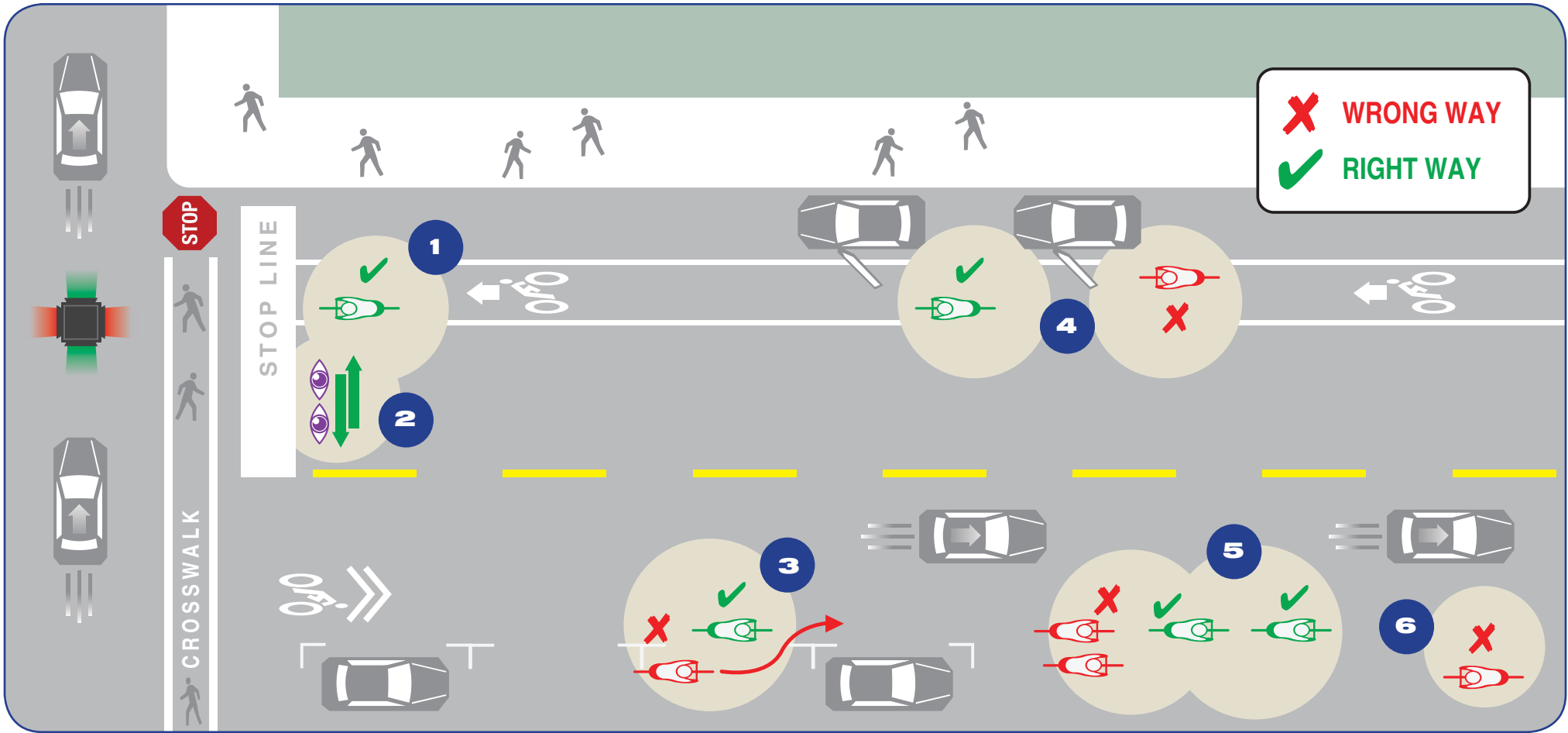
# KEEP RIDING



# BIKE SAFELY

Your Guide to Safe Bike Riding

English



**1** Obey all traffic signs and signals.

**2** Always look both ways before crossing or entering roadways. Yield to pedestrians.

**3** Ride in a straight line; do not weave between parked cars.

**4** Ride 3 feet from parked cars to avoid opening doors.

**5** Ride single file.

**6** Ride in the same direction as traffic.

